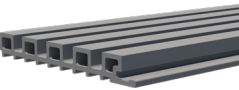


Technical Information Sheet

Dura Wall Panels



Product Description

Dura Wall Panels are co-extruded wood polymer composite panels which can be used as a decorative wall covering to give any area a modern aesthetic. Each panel measures 218.5mm x 25mm x 2900 mm, is installed vertically onto aluminium wall battens and finished with a corner trim piece. For pricing, availability and further technical information, please contact +44 (0)1255 423 601 or email info@duracomposites.com.

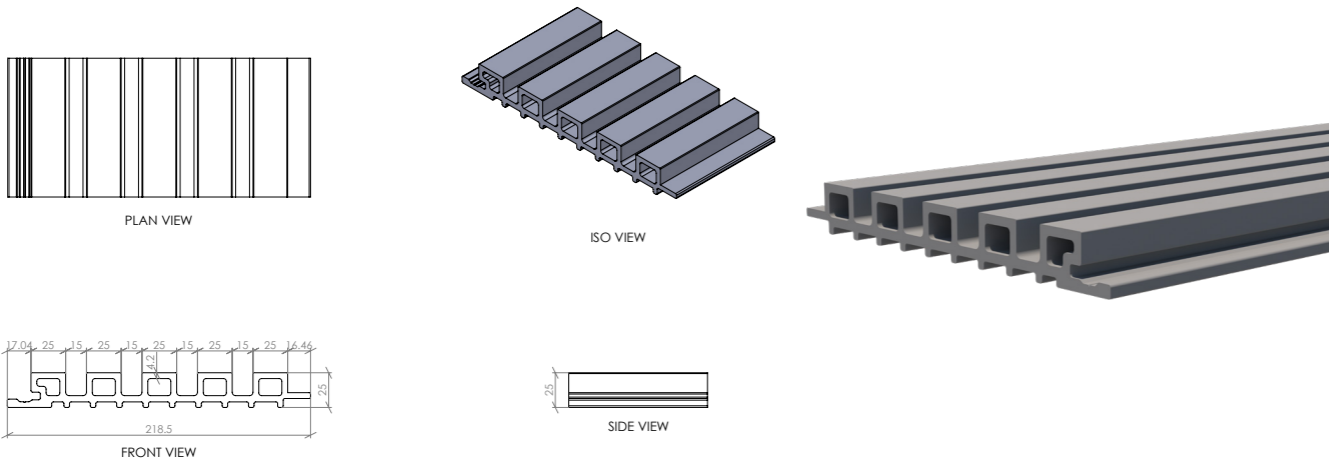
Product Details

Length (mm)	Width (mm)	Thickness (mm)
2900	218.5	25

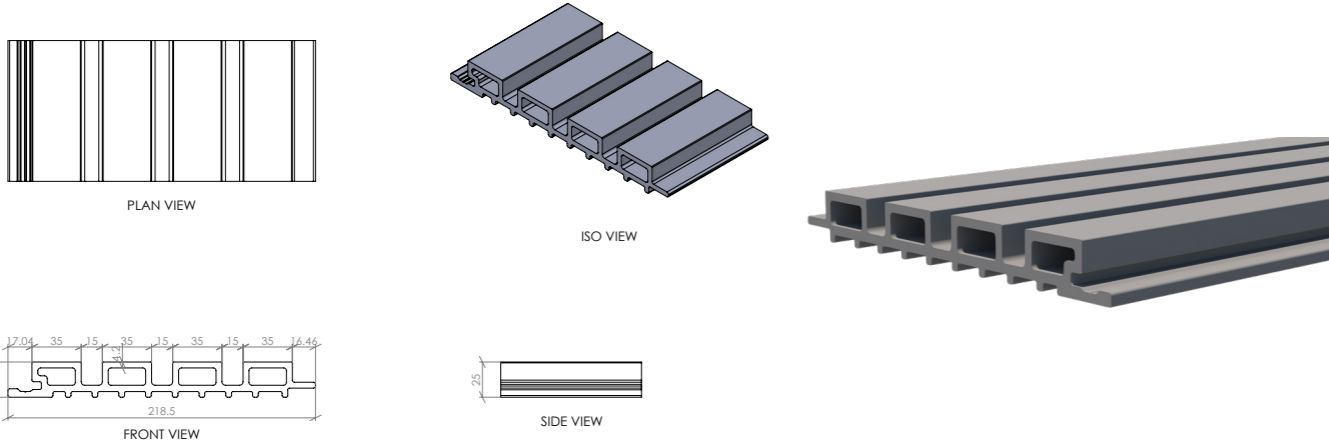
Cladding Panel Profiles

Please note the dimensions in the drawings below are shown in millimeters (mm).

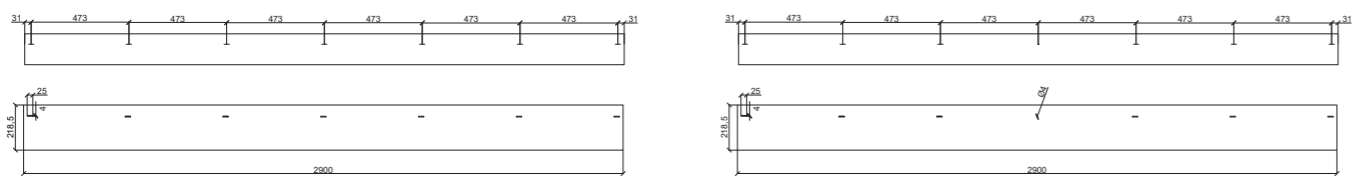
5 Slat Panel



4 Slat Panel



Drilling Hole Locations For 4 & 5 Slat Panels



Technical Information Sheet

Dura Wall Panels

Product Application & Material Type

Common applications for Dura Wall Panels include interior decorative wall cladding and exterior wall cladding. Dura Wall Panels have all the natural beauty of timber cladding and none of the maintenance drawbacks. Made from a mix of timber and polymers, its high-performance composition never needs painting or treating. The panel format makes it easier to work with than other single piece slat cladding alternatives and is perfect for DIY projects.

Colour Options

The Dura Wall Panel range is available in a range of 10 colours. Some colours may be held as stock by your local distributor for immediate call-off, whilst others may be subject to extended lead times. Please check with your regional representative prior to placing your order.

Fossil KC07	Baltic KC12	Dolphin KC37	Clove KC10	Husk KC36
Chocolate KC33	Pinecone KC06	Dawn KC08	Wafer KC42	Bluff KC32

Test Performance Overview

Test	Test Result
Bonding Strength Joist Span (400mm)	15.55 MPA
Load Deflection 500N	2.90 mm
Impact Resistance	4.2 KJ/m2
Modulus of Elasticity	1892 MPA
Load Capacity (Spacing 400mm)	3751N
Density	1.29 g/ cm3
Brinell Hardness	55.8 N/mm2
Resistance to Artificial Weathering	After 2000 hours exposure Δ E=0.61, Grey Scale 4-5
Swelling & Water Absorption (28 days immersion)	4% in thickness 0.6% in width 0.2% in length Water Absorption: 4%
Linear Thermal Expansion	43.9 x 10 ⁻⁶ / C
Resistance Against Micro-Fungi:	Rate 0, no growth
Abrasion Resistance	Wear Index: 31mg/1000r
Formaldehyde	Not detected

Warranty

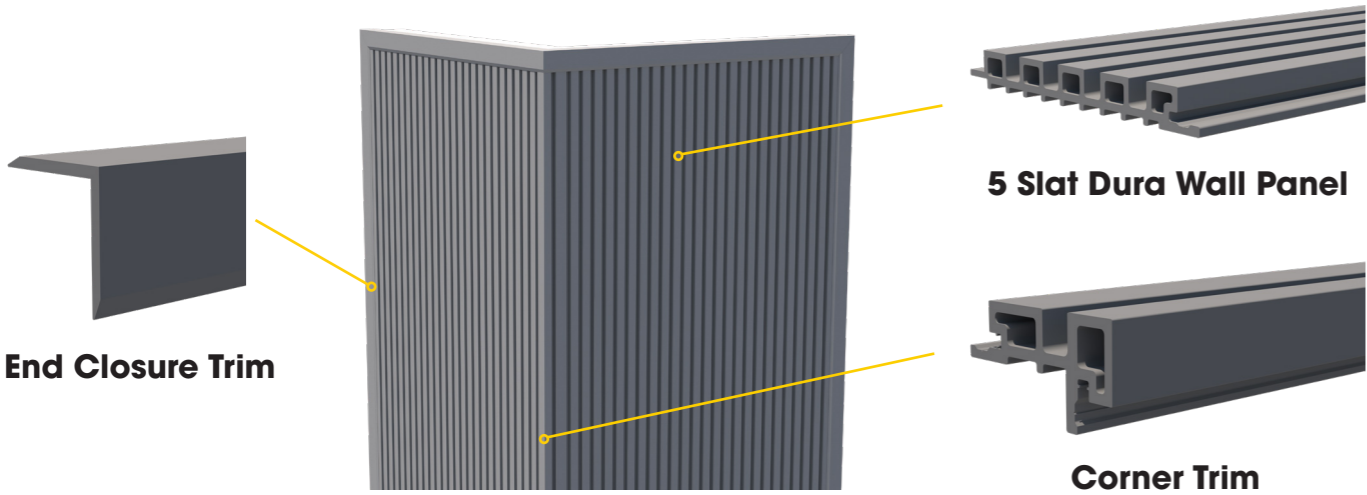
10 year limited warranty available. Please register your product with us within 30 days of your invoice date. Visit www.duracomposites.com/warranty.

Installation Sheet

Dura Wall Panels

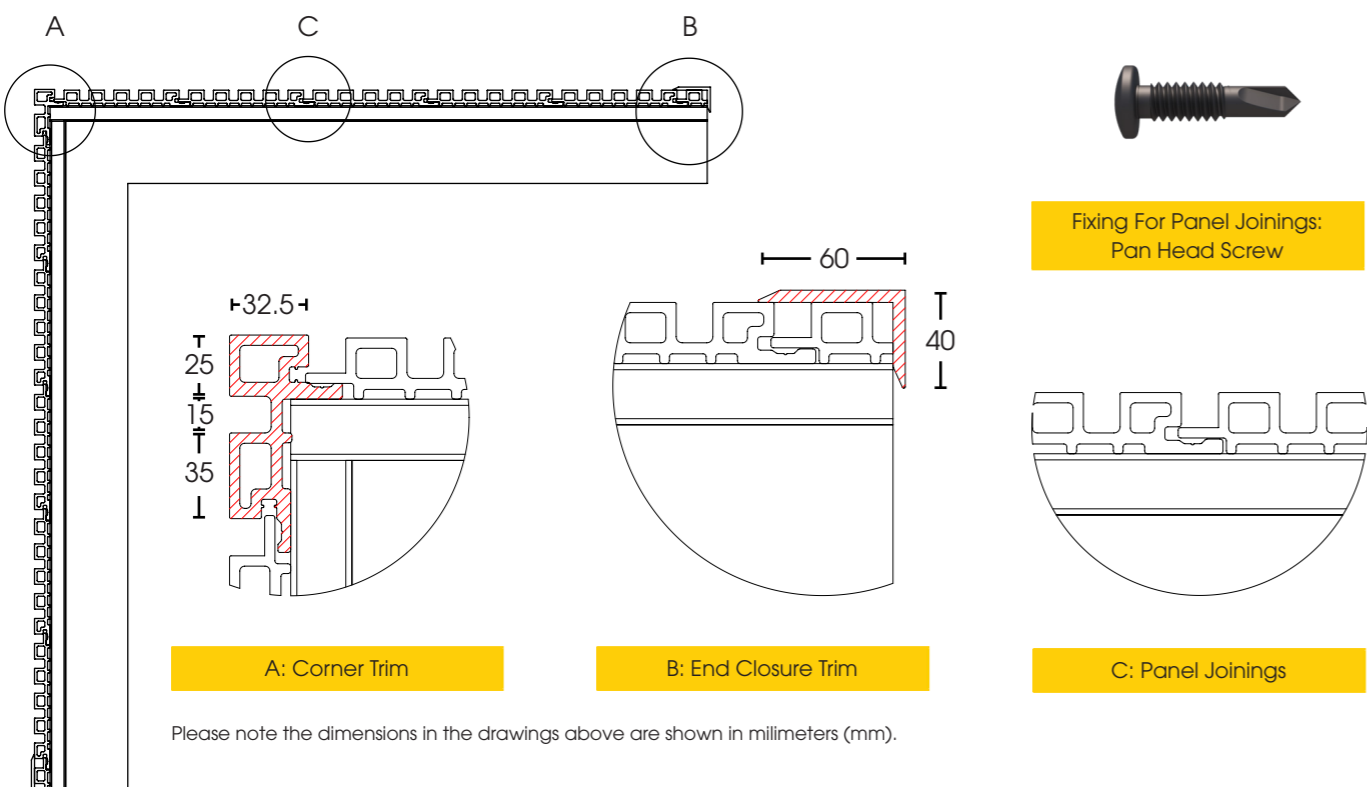
Product Components

Dura Wall Panels consist of the following three simple components for ease of installation.



Component Connections

The below illustrations highlight the connection detail for each trim piece as well as showcasing how the panel joining is achieved.



Fixings

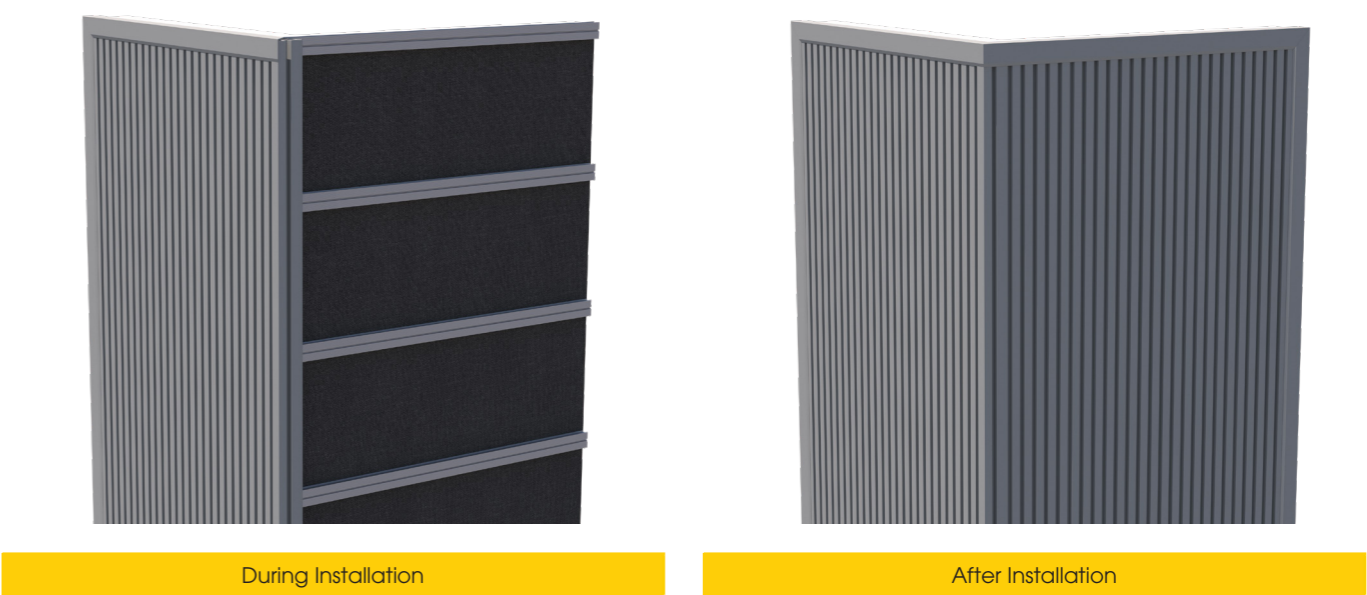
Pan Head screws should be used to affix the Dura Wall Panels. The screw should be positioned in the centre of the slotted hole to allow for expansion & contraction. Do not over tighten the screws and adjust torque settings according to your drill manufacturer's instructions. If the hole centres miss the battens, appropriate slotted holes must be drilled to allow for expansion and contraction.

Installation Sheet

Dura Wall Panels

Installation Process Example

Dura Wall Panels are designed to be installed vertically and follow a simple installation method. Once horizontal battens have been added to the area to be covered at intervals of 473mm, the panels can be fixed into place by screwing through the slotted hole. A Corner Trim can be used if your design requires coverage of multiple elevations, and a simple End Trim is used to cover exposed edges.



Installation Example

The below visual example shows the effect that can be achieved using Dura Wall Panels in Dolphin colour in an interior setting.

